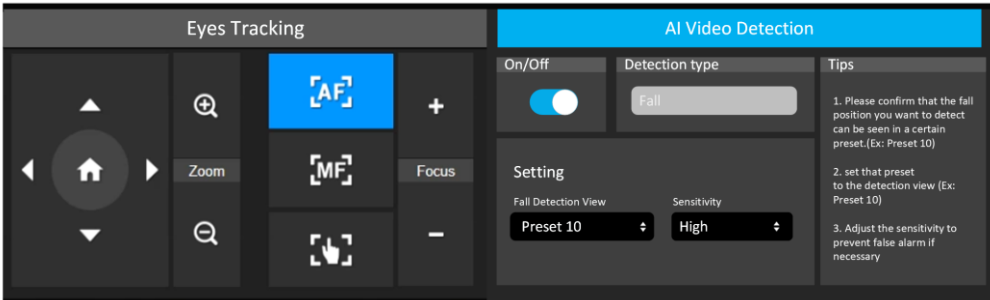
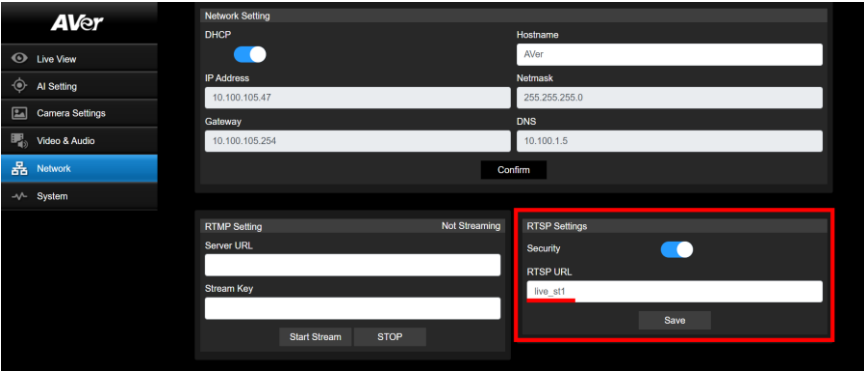
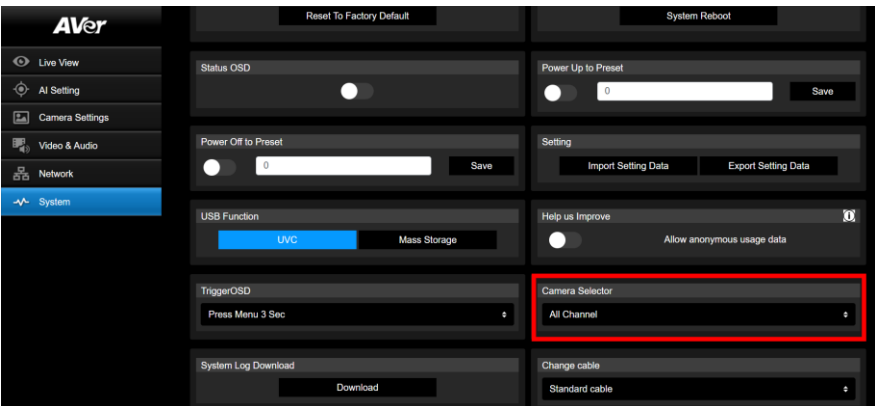


Release note

Product : MD120UI

****You need to press and hold [Menu] button on the RC to trigger OSD**

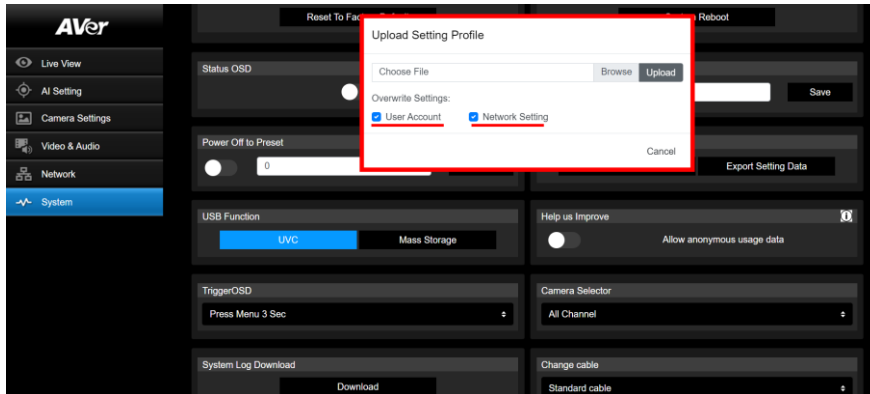
****Remove BETA function(AI Alert Detection)**

FW version	1.1.1012.0
Release date	2023/12/25
New feature	<ol style="list-style-type: none">Support AI Fall Detection WebUI >> AI >> AI Setting >> AI Video Detection when fall been detected in the FOV , MD120UI would trigger an event via network , this event can be received by AVer ViewCare or third-party SW which supported. Support Custom RTSP Settings WebUI >> Network >> RTSP Settings RTSP Sample : <code>rtsp://account:passwd@device_ip/rtsp_url</code> Support PELCO-D & PELCO-P Camera Control Protocol (RS-232)Now you can set the camera RC channel on WEB UI WebUI >> System >> Camera Selector 

5. Support more options to overwrite the setting when Importing Setting Data

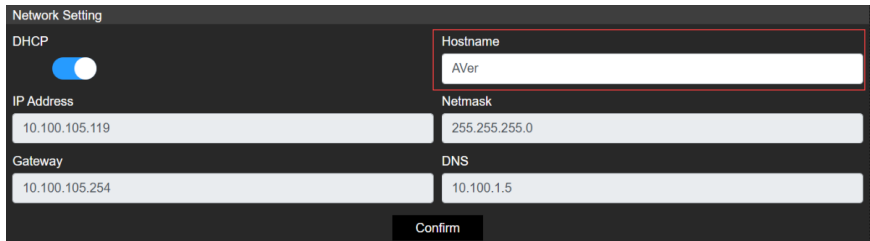
WebUI >> System >> Setting >> Import Setting Data

Check the [User Account] , [Network Setting] if you want to overwrite



6. Support Hostname on MSFT DNS server for better device management

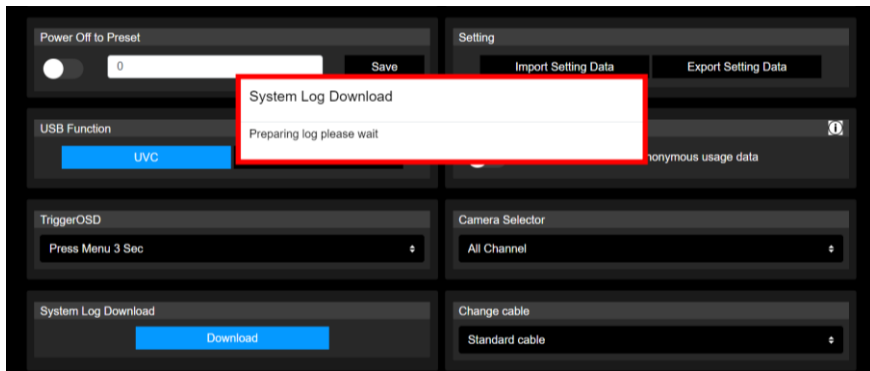
web UI >>> Network >>> Hostname, set the camera hostname and click [Confirm]



Improvement

- 1. Remove BETA function(AI Alert Detection)**
- 2. Improve AI Tracking stability and accuracy**
- 3. Improve AF(Auto Focus) in IR Night Vision**
- 4. Fixed UI issue on some browser setting**
- 5. Optimize user flow when download log**

A prompt window will pop up when the UI is temporarily frozen due to downloading logs.



Known issue

-

Release note

Product : MD120UI

****You need to press and hold [Menu] button on the RC to trigger OSD**

****AI Alert Detection is a BETA Function**

FW version	1.1.1008.0
Release date	2023/9/1
New feature	7. Camera ops change to improve usability. Camera would be set to AF after enable Eyes Tracking or AI function
Improvement	1. Improve AI Tracking and AF stability and accuracy. 2. Improve AF in IR Night Mode. 3. Improve system stability in long run.
Known issue	1. Under certain browser settings, the proportions of web UI might be distorted (does not affect operation.)